

## MOORING

Aquaglide offers a complete line of anchoring and mooring systems. If you are uncertain, we always recommend using a professional for installation of any anchored product.



### ANCHOR CONNECTOR LINE KIT

Heavy duty anchor line set for mooring Platinum™ items.

**Specs:** L 6' (183 cm) Galv chain, L 6' (183 cm) PE Bungee, L 20' 1/2" (6 m, 1,3 cm) Nylon, Asstd. 3000 lb. (1363,6 kg) load.



### 2-METER VERTICAL MOORING LINE

2-meter (6 ft) long heavy duty elastic mooring line for vertical mooring in pool or waterfront.

**Specs:** 2m L PE Bungee, Stainless Quick Snap, Float.



### 3-METER HORIZONTAL MOORING LINE

Pair of 3-meter (9.8 ft) long heavy duty elastic mooring lines for mooring to pool edge.

**Specs:** 3m L PE Bungee, Stainless Quick Snap, Float. 3000 lb. (1363,6 kg) load.



### PLATINUM™ SWIM BUOY SET

Heavy duty anchor line set for mooring Platinum™ items. Comes as set of 3 linking buoys.  
**Specs:** L 15' x 9" (457 cm x 23 cm) Diam., Linking SS ring/ clip, Set of 3.



### ANCHOR BAG SET w/ LINE

Complete anchor bag and line set for short-term anchoring of aquapark platforms.

**Specs:** 1000d Nylon bag, 20' 3/8" Nylon, 2 SS snaps. 750 lb. load.



### 4-WAY MOORING BRIDLE

4-way mooring bridle for Platinum™ items.

**Specs:** PP rope bridle, 4 SS snaps, 1 SS swivel. 1000 lb. load.



### 8 PERSON COMMERCIAL TOW ROPE

8-Person Platinum™ Tow Rope for commercial use.

**Specs:** 65 ft (19,8 m) Nylon, 2 Tow eyes, 10,000 lb. (4545,5 kg) load.

### North Sports®, Inc.

#1 North Shore Drive SE  
White Salmon, WA 98672  
U.S.A.

Tel 509.493.4938

Fax 509.493.4966

## PUMPS



### 12v Turbo HP Pump

10"L x 5"W x 21" H  
(25cm L x 13cm W x 53cm H)  
**Weight:** 3 lb 5oz (1,50kg)



### 12v Turbo Pump

Extremely powerful 12v electric pump for watersports and Platinum™ items.  
**Specs:** 12vDC power source, inflate/deflate-2.4 psi max



### 110v Turbo Pump

Extremely powerful 110v electric pump for watersports and Platinum™ items.  
**Specs:** 110vAC power source, inflate/deflate-2.8 psi max



### 120v PLATINUM™ PUMP

Commercial-grade 110/ 120v electric pump w/ dual motors for Platinum™ items.  
**Specs:** 120vAC power source, inflate/deflate -11.0 psi max



# Aquaglide

2016 RESORT RANGE



# RESORT RANGE



**FREEFALL™ SUPREME**  
L 307" x W 149" x H 199"  
(L 780cm x W 380cm x H 505cm)



**SUMMIT™ EXPRESS**  
L 358" x W 108" x H 197"  
(L 909cm x W 274cm x H 197cm)



**JUNGLE JOE™ 2**  
L 259" x W 180" x H 148"  
(L 658cm x W 547cm x H 376cm)



**FREEFALL™ EXTREME**  
L 250" x W 108" x H 115"  
(L 635cm x W 274cm x H 292cm)



**FREEFALL™ 6**  
160" L x 96" W x 72" H  
(406cm x 244cm x 183cm)



**JUNGLE JIM™**  
L 113" x W 104" x H 81"  
(L 287cm x W 264cm x H 206cm)



**REVOLUTION™**  
L 168" x W 96" x H 72"  
(L 427cm x W 244cm x H 183cm)



**AXIS™**  
L 146" x W 92.5" x H 61"  
(L 370cm x W 235cm x H 155cm)



**ROCKIT™ JR**  
L 114" x W 114" x H 43"  
(L 290cm x W 290cm x H 110cm)



**ROCKIT™**  
L 156" x W 156" x H 66"  
(L 396cm x W 396cm x H 168cm)



**REBOUND™ 12**  
L 145" x H 31"  
(L 368cm x H 79cm)

**REBOUND™ 16**  
L 192" x H 36"  
(L 488cm x H 91cm)

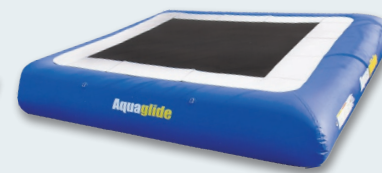
**REBOUND™ 20**  
L 236" x H 38"  
(L 599cm x H 98cm)



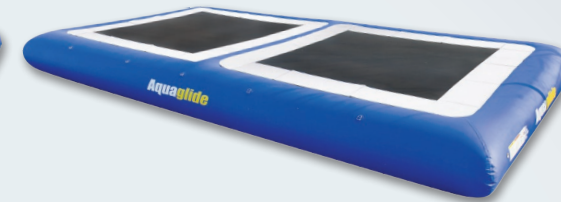
**SUPERTRAMP™ 14**  
L 168" x H 30"  
(L 427cm x H 76cm)  
(10' jump surface - 305cm)

**SUPERTRAMP™ 17**  
L 204" x H 36"  
(L 518cm x H 91cm)  
(12'9" jump surface - 389cm)

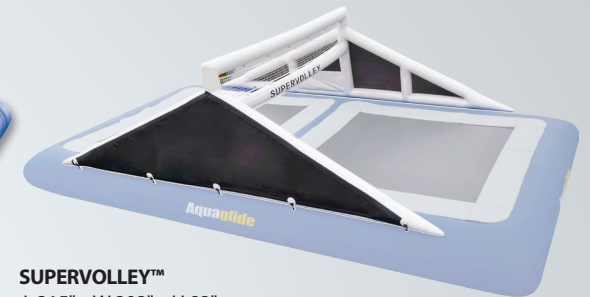
**SUPERTRAMP™ 23**  
L 270" x H 38"  
(L 686cm x H 95cm)  
(17'3" jump surface - 526cm)



**SUPERTRAMP™ 28 COMMERCIAL**



**SUPERTRAMP™ 35**  
L 419" x W 229" x H 42"  
(L 1065cm x W 581cm x H 42cm)



**SUPERVOLLEY™**  
L 315" x W 202" x H 82"  
(L 800cm x W 513cm x H 209cm)



**ESCALADE™ 2m**  
L 58" x W 61" x H 73"  
(L 148cm x W 155cm x H 185cm)



**ESCALADE™ 3m**  
L 61" x W 61" x H 98"  
(L 155cm x W 155cm x H 250cm)



**ESCALADE™ SUMMIT**  
L 27.5" x W 55" x H 144"  
(L 70cm x W 140cm x H 365cm)



**RUNWAY™ 10**  
L 120" x W 61" x H 4"  
(L 305cm x W 157cm x H 10cm)



**RUNWAY™ 20**  
L 238" x W 61" x H 4"  
(L 604cm x W 157cm x H 10cm)



**SPLASHMAT™**  
L 18" x W 59" x H 3"  
(L 549cm x W 150cm x H 8cm)



**BLAST II™ w/Wedgie**  
L 144" x W 65" x H 36"  
(L 366cm x W 165cm x H 91cm)



**SWIMSTEP™**  
L 56" x W 42" x H 8"  
(L 142cm x W 107cm x H 20cm)



**i-LOG™**  
L 120" x W 19" x H 19"  
(L 305cm x W 48cm x H 48cm)



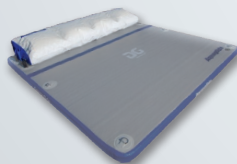
**PLUNGE SLIDE**  
L 79" x W 65" x H 53"  
(L 201cm x W 165cm x H 135cm)



**REBOUND™ SLIDE 12 & 16**  
12' Slide: L 86" x W 20" x H 54"  
(L 218cm x W 51cm x H 137cm),  
16 Slide: L 94" x W 20" x H 58"  
(L 239cm x W 51cm x H 147cm)



**SUNDECK™**  
L 79" x W 157" x H 5"  
(L 200cm x W 400cm x H 15cm)



**SUNDECK™ SOFTPACK**



**FIESTA™**  
L 120" x W 105" x H 12"  
(L 305cm x W 267cm x H 32cm)



**INVERSIBLE™**  
L 156" x W 144" x H 21"  
(L 396cm x W 366cm x H 55cm)



**BRAVO™**  
L 134" x W 134" x H 28"  
(L 340cm x W 340cm x H 71cm)



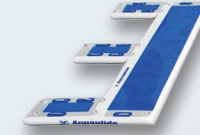
**METRO™ 3**  
L 116" x W 31" x H 25"  
(L 295cm x W 79cm x H 63.5cm)



**METRO™ 5**  
L 154" x W 49" x H 27"  
(L 391cm x W 125cm x H 69cm)



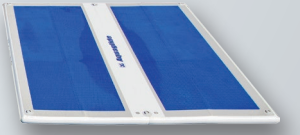
**METRO™ 6**  
L 173" x W 49" x H 27"  
(L 439cm x W 125cm x H 69cm)



**DOCKING STATION™**  
L 79" x W 157" x H 5"  
(L 200cm x W 400cm x H 15cm)



**OCEAN POOL™ 4M**  
L 157" x W 157" x H 5"  
(L 400cm x W 400cm x H 15cm)



**LANDING PAD™**  
L 157" x W 157" x H 5"  
(L 400cm x W 400cm x H 15cm)



**YACHT TUBE SMALL**  
L 62" x W 12" x H 12"  
(L 158cm x W 30cm x H 30cm)



**OCEAN POOL**  
L 197" x W 197" x H 98"  
(L 305cm x W 157cm x H 10cm)



**ESCALADE™ 5M**  
L 23" x W 118" x H 197"  
(L 58 cm x W 300 cm x H 500 cm)



**YACHT SLIDE**  
Custom size

# ADVENTURE SERIES



**ZULU™**  
L 129" x W 78" x H 63"  
(L 328cm x W 198cm x H 160cm)



**VISTA™**  
L 120" x W 78" x H 58"  
(L 305cm x W 198cm x H 147cm)



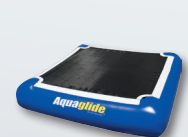
**SIERRA™**  
L 120" x W 96" x H 42"  
(L 305cm x W 244cm x H 107cm)



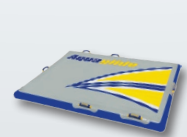
**FOXTROT™**  
L 240" x W 78" x H 18"  
(L 610cm x W 200cm x H 48cm)



**DELTA™**  
L 120" x W 81" x H 18"  
(L 305cm x W 205cm x H 46cm)



**TANGO™**  
L 120" x W 61" x H 4"  
(L 305cm x W 157cm x H 10cm)



**SWIMSTEP™ XL**  
L 60" x W 78" x H 5"  
(L 152cm x W 198cm x H 12cm)



**SWIM BUOY SET**  
L 15" x 9"  
(L 457cm x 23cm)



**YACHT TUBE LARGE**  
L 62" x W 16" x H 16"  
(L 158cm x W 40cm x H 40cm)